

JUDGING THE FRENCHIE

Making the Most of Your Two Minutes

Patricia A Sosa 2020

Remember, your first impression is usually the right one . Your eye will go to balance and proportion of the silhouette.



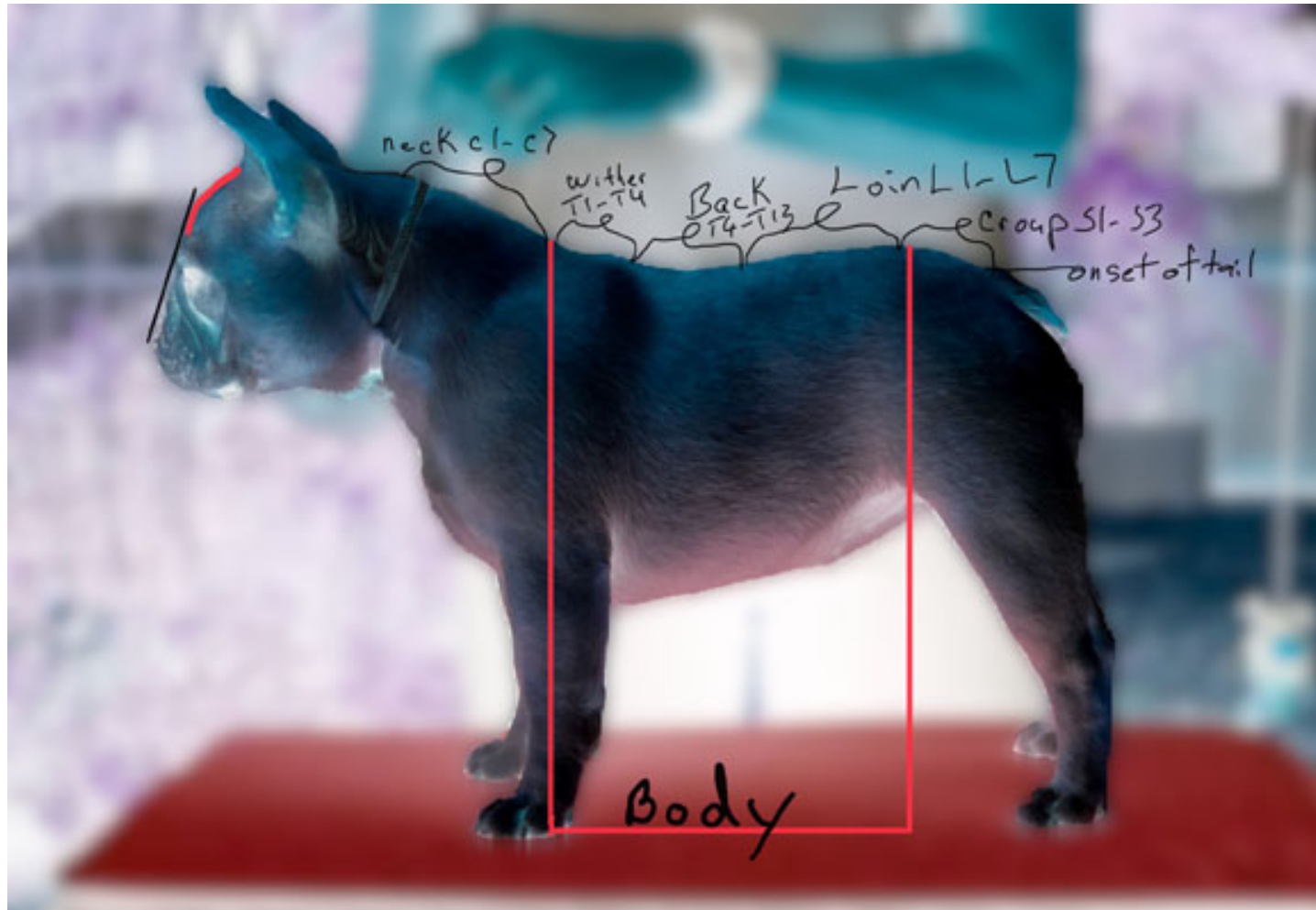
WORDS NOT IN THE STANDARD TO DESCRIBE THE FRENCHIE

- COBY- Not in the Standard
- CUTE- Not in the Standard
- SQUARE (Square is only used to describe the head-when viewed from the front).

THE ELEMENTS OF TYPE

- 1. SILHOUETTE
- 2. HEAD
- 3. MOVEMENT,
- 4. PROPORTIONS
- 5. BALANCE:
- Proportions: Distance from WITHERS to GROUND in good relation to distance from WITHERS to ONSET OF TAIL. Remember there is a dog in front of the withers and behind onset of tail.
- Proportions : correct proportions produce distinctive silhouettes.

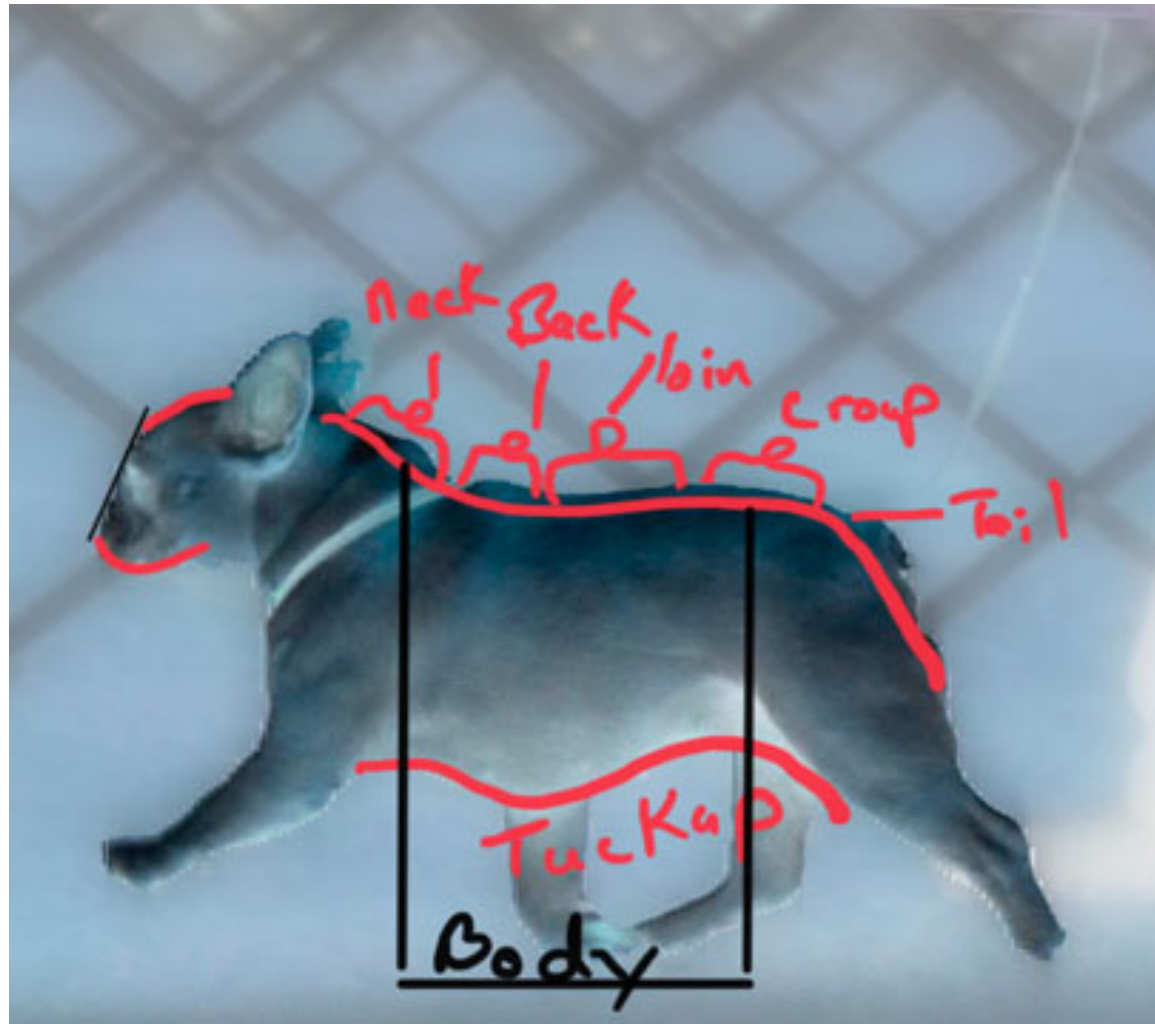
FRENCH BULLDOG ANATOMY



The BACK is SHORT

- The back as is in diagram is from the T4-T13.
- The BODY is SHORT. The definition of body: The anatomical section between the FORE & HINDQUARTERS.
- It consists of: the chest, in front, and abdomen in rear. The bodies upper portion is the thoracic & lumbar section of spine.
STANDING OR MOVING THE OUTLINE IS THE SAME.

THE OUTLINE IS THE SAME: STANDING OR MOVING



- HEAD: Large, Square.
- Eye: Dark, ROUND in form.
- EARS- Bat Ear, Broad at the base, Elongated (erect), & round at the top.
- Carriage at 11 & 1.
- STOP: Well defined with heavy wrinkles forming a soft roll over the extremely short nose.
- NOSE: Black (a lighter color nose is acceptable in dogs without black masks, but not desirable).
- MUZZLE: Broad, Deep Well Laid Back.
- UNDERJAW: Deep, Square, Broad, Undershot, well turned up.

BELOW IS THE DECONSTRUCTION OF THE HEAD AND FRONT:

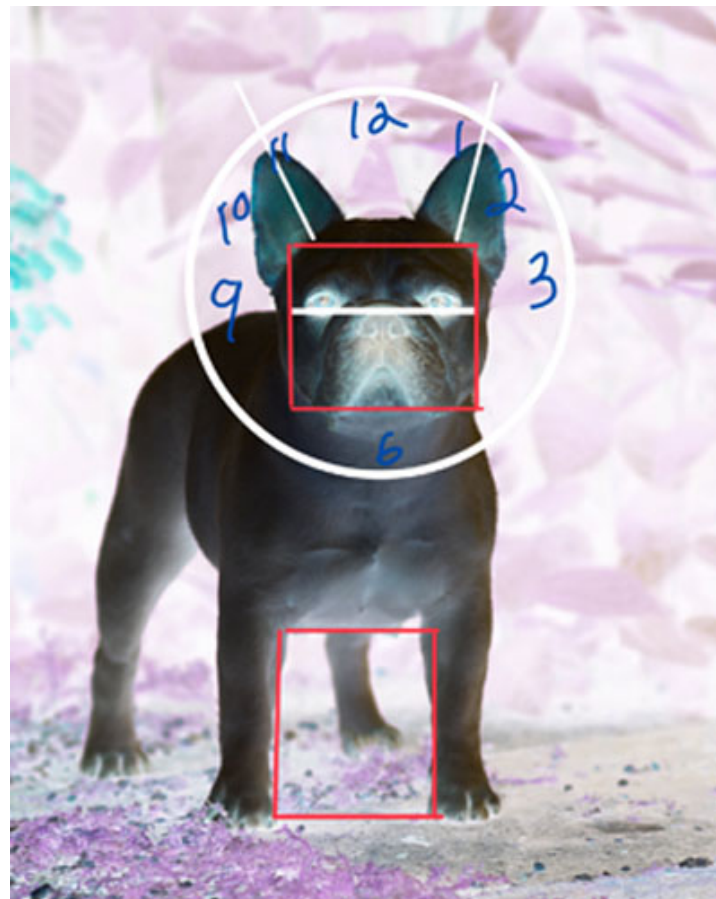
EAR SET

EYE TO NOSE

SQUARE OF HEAD

WIDTH OF CHEST

BALANCE OF HEAVY BONE AND MUSCULAR APPEARANCE.



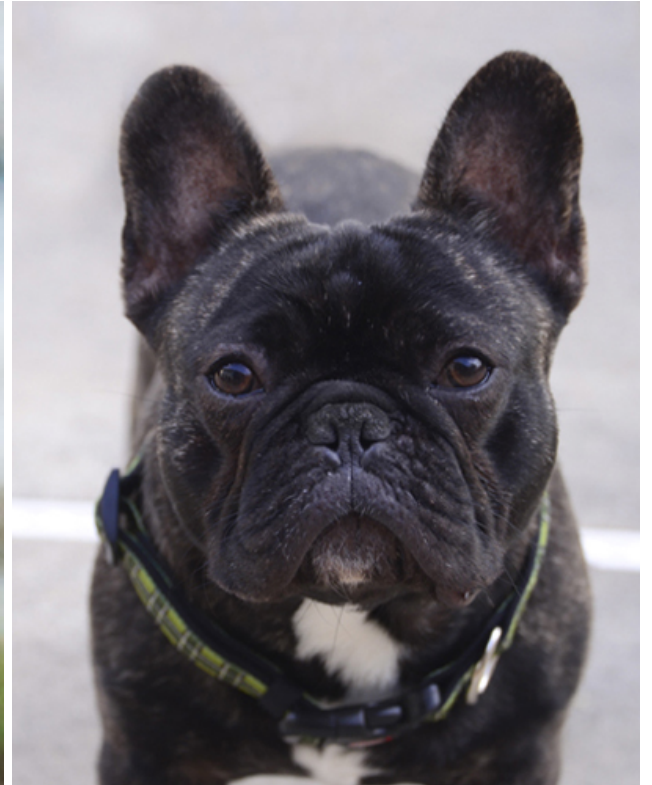
Cream



Fawn (black mask)



Black Brindle



Brindle Pied

Acceptable Colors:

White, cream, Fawn

Acceptable Patterns:

Brindle, Black Brindle, Piedball, Black Mask, Black Shadings and White Markings

Movement: four tracking foot pattern with the front track wider than the rear track. The movement should have reach & drive and is unrestrained, free and vigorous. (Directly from the standard)



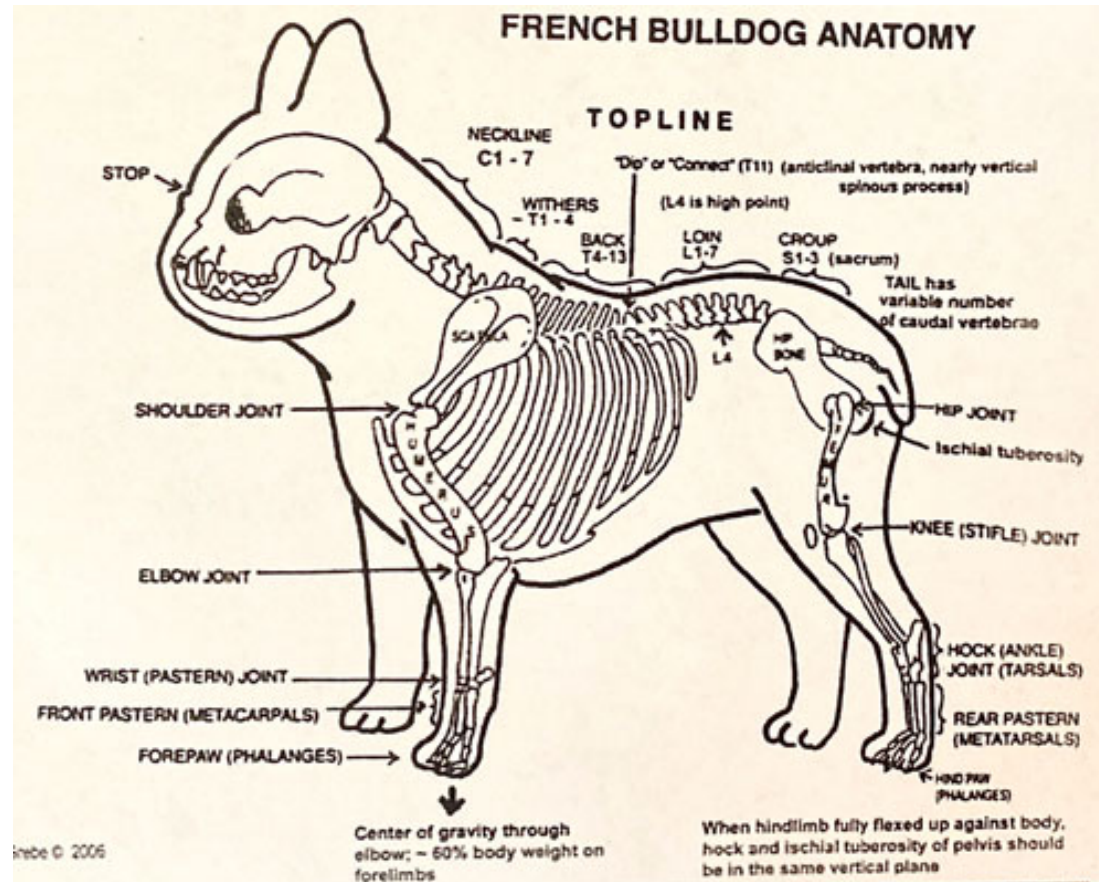
Movement: four tracking foot pattern with the front track wider than the rear track. Seen from behind.



THE ONLY SERIOUS FAULT IN THE STANDARD DEALS WITH BITES.
WRY MOUTHS AND ANY BITES OTHER THAN UNDERSHOT ARE
SERIOUS FAULTS

DISQUALIFICATIONS

- Blue or Green eyes or any traces.
- Over 28 pounds in weight.
- Other than bat ears.
- Coats other than short and smooth.
- Nose other than black except in creams and self masked fawn dogs where a lighter colored nose is acceptable.
- Solid black, blue, blue fawn, merle, liver, black & tan, black & white, white & black. Black means without a trace of brindle.



- AKC STANDARD:
- <https://www.akc.org/dor-breeds/french-bulldog/>
- Parent Club: FBDCA.org
- FCI STANDARD:
- <http://www.fci.be/en/nomenclature/FRENCH-BULLDOG-101.html>